

Lero, The SFI Research Centre for Software

A World Leading SFI Research Centre



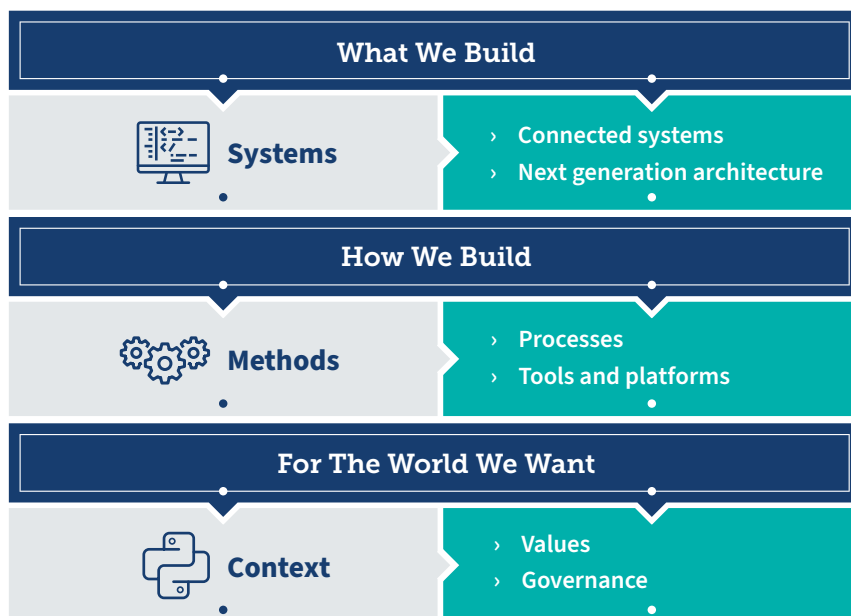
Lero brings together leading software teams from universities and institutes of technology in a co-ordinated centre of research excellence with a strong industry focus.

LEERO Software for a better world



Ireland is recognised internationally as a leading location for companies in the software sector. Sixteen out of the top 20 global technology firms have strategic operations in Ireland. Lero is a key pillar of that success partnering with four of the top 10 technology companies worldwide. Since it was founded in 2005, Lero has become one of the best-known, and most highly regarded, software research centres in the world.

Research Programmes



Research Areas

Lero has expertise across multiple disciplines from deep theoretical computer science and formal methods through to participatory design, human-computer interaction, ethics and values. Lero works collaboratively with industry partners to identify and solve specific problems.

Lero's research programme comprises systems (what we build), methods (how we build) and context (for the world we want) in six key application domains:

- > Connected autonomous vehicles
- > Health, wellbeing & human performance
- > Smart communities/cities
- > GovTech
- > FinTech
- > AgriTech & food

Industry and Commercialisation

Lero works with a wide range of industry sectors, State agencies, educational bodies and international collaborators to deliver on its twin goals of research excellence and social and economic relevance.



HOST INSTITUTION



PARTNER INSTITUTIONS



Industry partners include:

- > ACI Worldwide
- > Allstate Insurance
- > Analog Devices
- > ARM
- > Bon Secour Hospital Group
- > Dell
- > Dairymaster
- > European Space Agency
- > Fidelity Investments
- > Horizon Globex
- > Hertz
- > IBM
- > Information Mosaic
- > Intel
- > Jaguar Land Rover
- > KOSTAL Automotive Electrical Systems
- > Logitech
- > Liebherr Container Cranes
- > Microsoft
- > McHale Farm Machinery
- > Portable Medical Technology
- > S3 Group
- > Salaso Healthcare
- > Stryker Medical
- > Software Quality Systems
- > STATSports
- > Toyota
- > United Technologies Research Centre
- > Valeo Vision Systems

Education and Public Engagement:

The Lero EPE programme trains software practitioners at all levels of the education system and engages with the public through Lero research.

Lero, in collaboration with Science Foundation Ireland, is involved in many local and national events including Science Week, EU Code Week, Pint of Science and the Scratch competition.

Lero has significant involvement in introducing computer programming into the primary and post-primary school curriculum.

Lero promotes awareness in technology through initiatives such as:

- > Scratch Programming in schools
- > The Junieur Cycle Short Course in Coding
- > CodePlus

Lero conducts research on computer science (CS) in schools, specifically around professional development for teachers and student experiences of CS.

Lero engages with the public focusing on “Responsible Software Engineering” as an underlying theme.

Key Contacts

Professor Brian Fitzgerald

Centre Director

Brian.Fitzgerald@Lero.ie

Professor Brian Fitzgerald has been a Science Foundation Ireland Principal Investigator (PI) since 2002. He was one of the pioneers of research into Open Source software and is widely recognised as a global leader in the study of software development processes and methods. He was one of the founding PIs in Lero where he has been a researcher since its inception, apart from a period from 2008-2011, when he served as Vice-President for Research at the University of Limerick. Currently, Director of Lero, he previously held the role of Chief Scientist. He also holds an endowed professorship, the Frederick A. Krehbiel Chair in Innovation and Business Technology, at University of Limerick. He was recently elected as President of the Association for Information Systems, the global body for information systems worldwide.

Joe Gibbs

General Manager

Joe.Gibbs@Lero.ie

Clare McInerney

Education and Public

Engagement Manager

Clare.McInerney@Lero.ie

Nicola Corless

Marketing and Communications
Manager

Nicola.Corless@Lero.ie

Lero, The SFI Research Centre for Software

Tierney Building
University of Limerick
Limerick
Ireland
V94 NYD3

+353 61 213 028
www.lero.ie
LeroCentre
Lero-Centre
#SoftwareForABetterWorld

FUNDED BY:



Tel: +353 (0)1 6073200

Email: info@sfi.ie

www.sfi.ie

@scienceirel

@ScienceFoundationIreland

@ScienceFoundationIreland

@scienceireland

ScienceFoundationIreland

#BelieveInScience